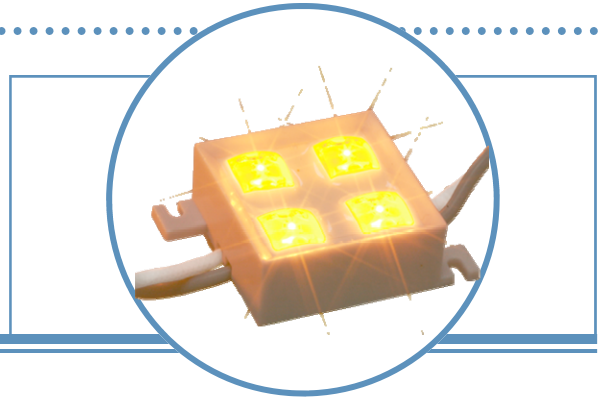


# 4 LED Module Strips (20 modules / strip)

## OVM18F4x7

- Available in Red, Amber, Green, Blue & White
- Low Power Consumption
- Super Flux LED
- Waterproof ( IP67 )
- Pb-free
- 3 inches to over 13 feet long



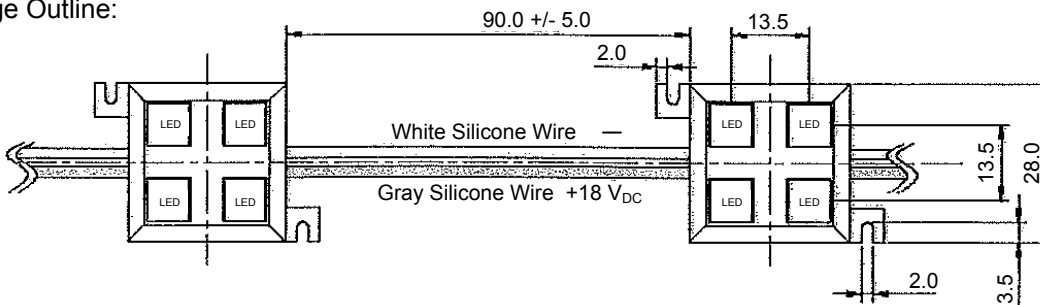
The **OVM18F4x7** is a versatile string of LED modules for surface illumination creating decorative, special effects or channel letter applications. Response time is fast for instantaneous flashing lights and low power consumption results in low power requirements from circuit power supply. Decorative applications include boats & motorcycles, boat houses & docks, residential under counter lighting & hidden ceiling lights, safety lights around steps and pools are just a few places to create an environment for fun and emotional moods.

### Applications

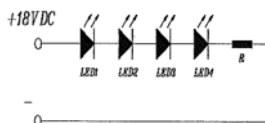
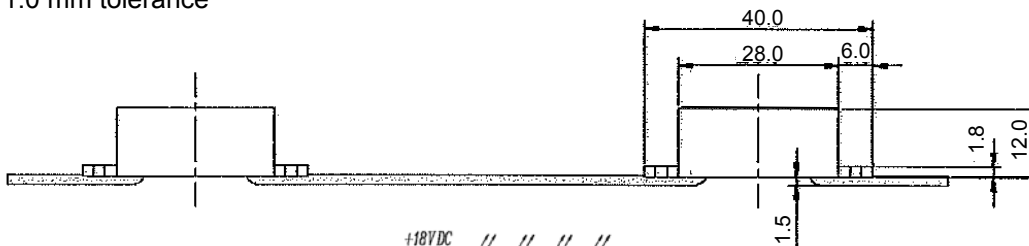
- Channel Letters & Signs
- Mood-setting decoration and landscape lighting
  - Special decorative interior/exterior lighting
  - Special effects stage lighting
- Large Area Back-lighting

Part Number	Material	Emitted Color	typ Lux @ 0.5 m	Lens Color
OVM18F4x7	Waterproof sealed	Basic colors	Selection Chart	Water Clear

Package Outline:



Dimensions in mm with  
+/- 1.0 mm tolerance



**DO NOT LOOK DIRECTLY AT RED WITH UNSHIELDED EYES OR DAMAGE TO RETINA MAY OCCUR.**

OPTEK reserves the right to make changes at any time in order to improve design and to supply the best product possible.

# 4 LED Module Strips

OVM18F4x7



## Absolute Maximum Ratings

T<sub>A</sub> = 25° C unless otherwise noted

Storage Temperature Range	-40 ~ +80 °C
Operating Temperature Range	-30 ~ +50 °C
Input Voltage	20 V
Power Dissipation	1.5 W
LED Junction Temperature	125 °C

Notes:

1. Lead Solder time less than 10 seconds at temperature extreme.
2. No Heat sink is required if the string is operated at ambient temperature < 35°C. For long term performance the drive voltage between 12 V and 18 V is recommended. Please contact an Optek sales representative for more information on recommended drive conditions.

## Electrical Characteristics

T<sub>A</sub> = 25° C unless otherwise noted

SYMBOL	Notes	MIN	TYP	MAX	UNITS	CONDITIONS
Power Consumption	Red/Yellow Green/Blue/White	---	0.8 0.4	---	W	V <sub>DC</sub> = 18 V
V <sub>DC</sub>	Input Voltage	18	---	20	V	
Net Weight		---	14	---	g	Per module
λ <sub>D</sub>	Dominant Wavelength	---	See chart	---		
2 Θ <sub>½</sub>	50% Power Angle	---	120	---	deg	V <sub>DC</sub> = 18 V

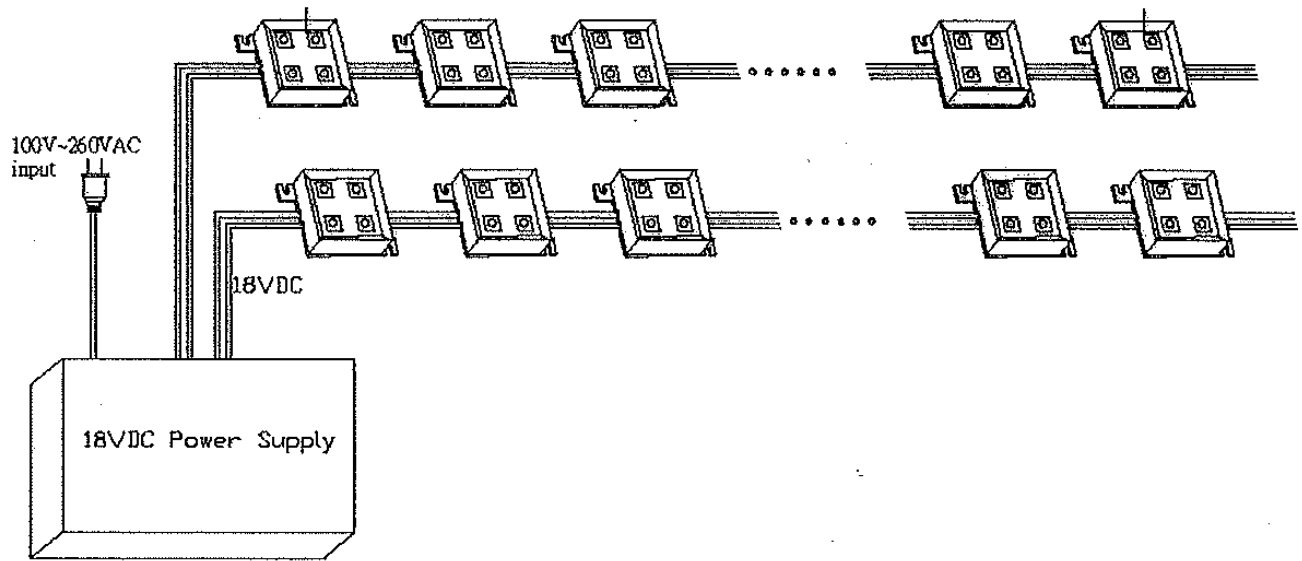
## Device Selection Guide

Part Number	Color	Dominant Wavelength or CCT	Illumination (lux@0.5m) typ	Safety Grade
OVM18F4R7	Red	623 +/- 3 nm	24	IP67
OVM18F4Y7	Yellow	590 +/- 3 nm	22	IP67
OVM18F4G7	Green	525 +/- 5 nm	16	IP67
OVM18F4B7	Blue	470 +/- 5 nm	8	IP67
OVM18F4W7	White	5000 to 7000 K	20	IP67

OPTEK reserves the right to make changes at any time in order to improve design and to supply the best product possible.

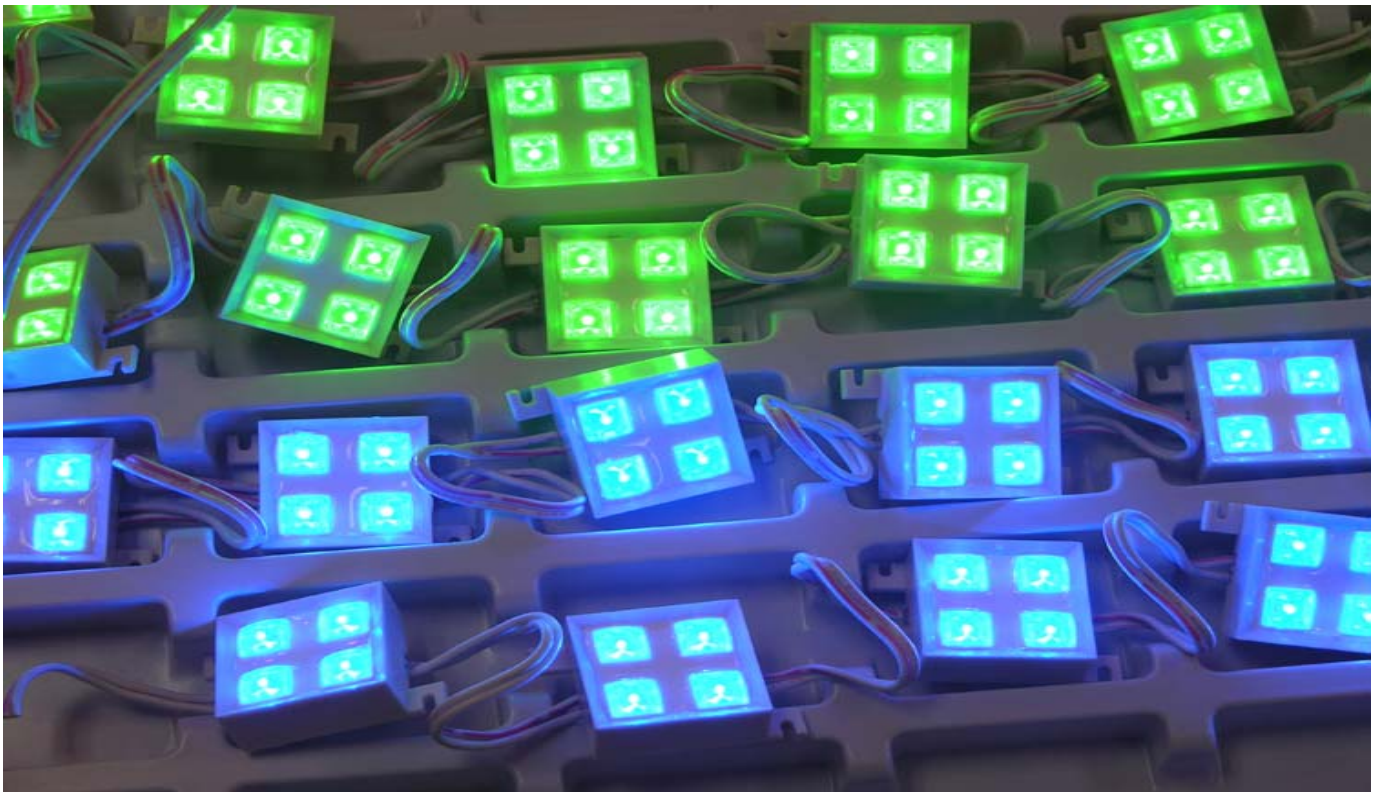
# 4 LED Module Strips

OVM18F4x7



A twenty (20) LED Module string can be linked & driven with 18V<sub>DC</sub> as received out of the box. However, a maximum of 30 Red / Amber modules can be linked together in one serial string (Blue/Green/White up to 50 modules max in one serial string) with 18V<sub>DC</sub>. As many parallel strings that the power unit can handle is acceptable as long as the number of max modules stated above are linked in each serial string.

Modules can be secured onto a mounting surface with two screws. Modules are waterproof and can be used outdoors — installer is responsible for waterproofing the connection to the power source. Installer is also responsible for the use of an exterior approved power source for outdoor usage.

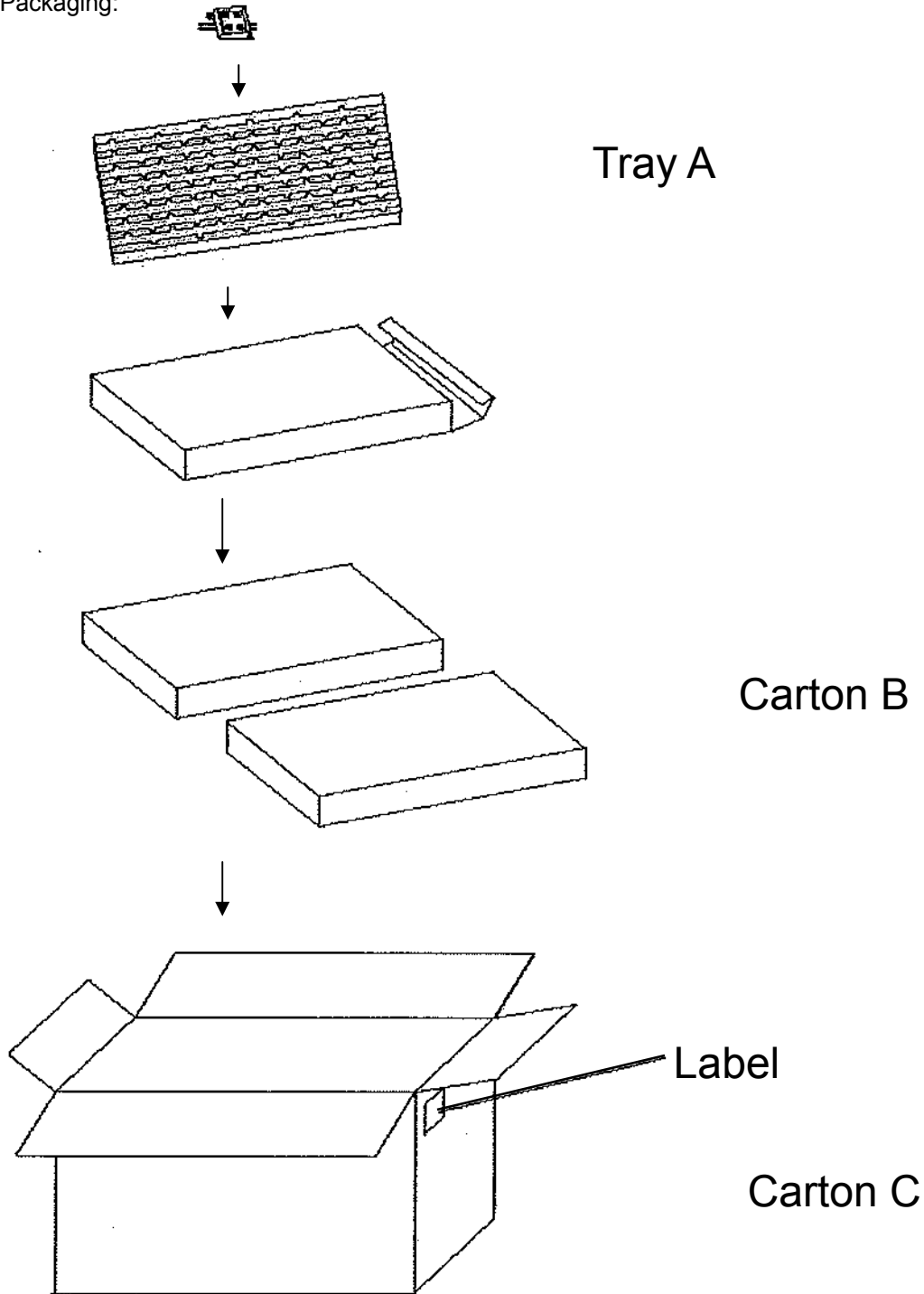


OPTEK reserves the right to make changes at any time in order to improve design and to supply the best product possible.

# 4 LED Module Strips

OVM18F4x7

Shipment Packaging:



Notes:

- (1) Tray A packing quantity is 4 strips of 20 modules each
- (2) Carton C contains 10 carton Bs and carton B contains 1 tray A

OPTEK reserves the right to make changes at any time in order to improve design and to supply the best product possible.